



## PATTAYA'S FIRST WELLNESS-CENTERED LIVING EXPERIENCE



Computer Generated Image



Computer Generated Image



Computer Generated Image



[WWW.ZENITHPATTAYA.COM](http://WWW.ZENITHPATTAYA.COM)

Zenith Pattaya, Soi 15, Thappraya Road, Pattaya City, Chonburi 20150

ZENITH  
PATTAYA

PATTAYA'S FIRST WELLNESS-CENTERED  
LIVING EXPERIENCE

Construction plans, delivery periods or project details are subject to change and the Company will endeavor to proceed within the specified timeframe, depending on various factors such as weather conditions, governmental conditions or other unexpected events. The Company reserves the right to change the information in the sales document without prior notice. The computer generated images are used only as part of the advertisement and description of the usage pattern. The information, images or simulation images appearing in the documents and public relations are for preliminary information only. They are subject to change without prior notice, which may be due to technical limitations or legal requirements.



Heaven Spring Spa



Swimming Pool

*Elevating Lifestyle and Wellness*



Pool Bar

# THE ZENITH HEAVEN SPRING SPA

Zenith Pattaya redefines boutique luxury with state-of-the-art amenities and a prime location in the heart of Pattaya City. This exclusive low-rise development offers a harmonious blend of comfort and convenience for a vibrant lifestyle centered on health and wellness.

Residents can enjoy seamless access to downtown Pattaya, Pratumnak and Jomtien beaches, and Buddha Mountain. With nearby transport links, reaching golf courses and airports, including U-Tapao and Suvarnabhumi, is effortless. Zenith Pattaya elevates high-end living to new heights.

ZENITH  
PATTAYA

PATTAYA'S FIRST WELLNESS-CENTERED  
LIVING EXPERIENCE

Zenith Pattaya is a masterpiece of Japanese-inspired design and Pattaya's first wellness-centered living experience, redefining tranquility and luxury. This exclusive development features 582 thoughtfully designed high-ceiling units spread across three elegant 7-storey buildings on a sprawling 6 Rai (9,600 sqm) property. A wealth of on-site health and wellness facilities awaits, including expansive swimming pools framed by traditional Japanese landscaping, fostering an atmosphere of serenity and

rejuvenation. Ideally located between Pattaya Bay, Jomtien Beach, and Pratumnak Hill, the development offers a prime central location that balances exclusivity with convenience, surrounded by private residences while remaining close to vibrant attractions and essential amenities. With market-leading price points, Zenith Pattaya not only delivers an extraordinary lifestyle but also offers exceptional investment potential, promising excellent capital growth and rewarding rental income opportunities.



# REDEFINING MODERN COMFORT

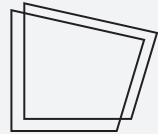
Zenith Pattaya offers a lifestyle of true relaxation and rejuvenation with its exceptional facilities. Dive into the stunning main pool, unwind in the tranquil Onsen bath and spa, or energize your body at the state-of-the-art TechnoGym fitness center. For moments of serenity, the Yoga Studio provides a peaceful retreat. The kids' pool adds a touch of fun for the little ones, while lush tropical landscapes create a calming atmosphere throughout. Every amenity is designed to help you feel at ease, pampered, and connected to a vibrant community.

At Zenith Pattaya, every day is an opportunity to live well, unwind, and embrace the perfect balance of comfort and luxury. Whether you're relaxing by the pool, recharging at the spa, or enjoying the peaceful ambiance, each moment is crafted to enhance your sense of well-being.



## Amenities

Experience a thoughtfully curated selection of world-class amenities designed to inspire balance and well-being. Whether you're refreshing in the shimmering pool, unwinding in the serene Onsen spa, staying active in the cutting-edge fitness center, or finding peace in the Yoga Studio, every detail is crafted to cater to relaxation and vitality. Surrounded by lush greenery and inviting spaces, these amenities create the perfect backdrop for a life of comfort, connection, and rejuvenation.



# ICON OF URBAN LUXURY LIVING

Zenith Pattaya redefines boutique luxury, offering an unparalleled sanctuary of refined health & wellness living in the heart of Pattaya City. This exclusive low-rise haven blends timeless elegance with modern amenities, crafted to inspire a vibrant, healthy lifestyle. Every detail is designed to enrich daily life, from effortless access to Pattaya's lively downtown and cultural treasures like Buddha Mountain, to tranquil escapes at Pratumnak and Jomtien's pristine beaches. Perfectly positioned, Zenith Pattaya ensures seamless travel with nearby transport links, connecting you to championship golf courses and international airports such as U-Tapao and Bangkok's Suvarnabhumi. Here, sophistication meets serenity, creating a living experience where luxury, convenience, and lifestyle harmonize beautifully, making Zenith Pattaya the perfect choice for those who desire the extraordinary in one of Thailand's most captivating destinations.

*Pattaya new standard of Boutique Luxury*



# RETREAT IN THE HEART OF PATTAYA

Zenith Pattaya seamlessly blends modern design, timeless luxury, and a refined lifestyle, creating a harmony of sophistication and comfort. Offering a serene urban sanctuary and an exceptional investment opportunity, the development embodies elegance and potential in Pattaya's thriving landscape. With thoughtfully designed interiors, world-class amenities, and an unbeatable location, Zenith sets a new standard for high-end living. Whether you desire a tranquil retreat or a savvy investment, Zenith Pattaya promises an extraordinary experience that stands apart.



## ULTIMATE LIVING EXPERIENCE

The units at Zenith Pattaya are thoughtfully designed with an emphasis on creating an unparalleled living experience. Every detail is carefully crafted to enhance comfort and convenience, from the spacious layouts to the premium finishes. The generous high ceilings and luxurious marble-inspired tiling provide a sophisticated yet functional environment, while expansive windows invite natural light and offer stunning views of the lush landscape or vibrant cityscape. The design prioritizes both aesthetics and practicality, ensuring a seamless flow between spaces that caters to both relaxation and entertaining. Each unit is built to foster a peaceful, elevated lifestyle, providing a true sanctuary for those who seek the perfect balance of style, comfort, and tranquility.

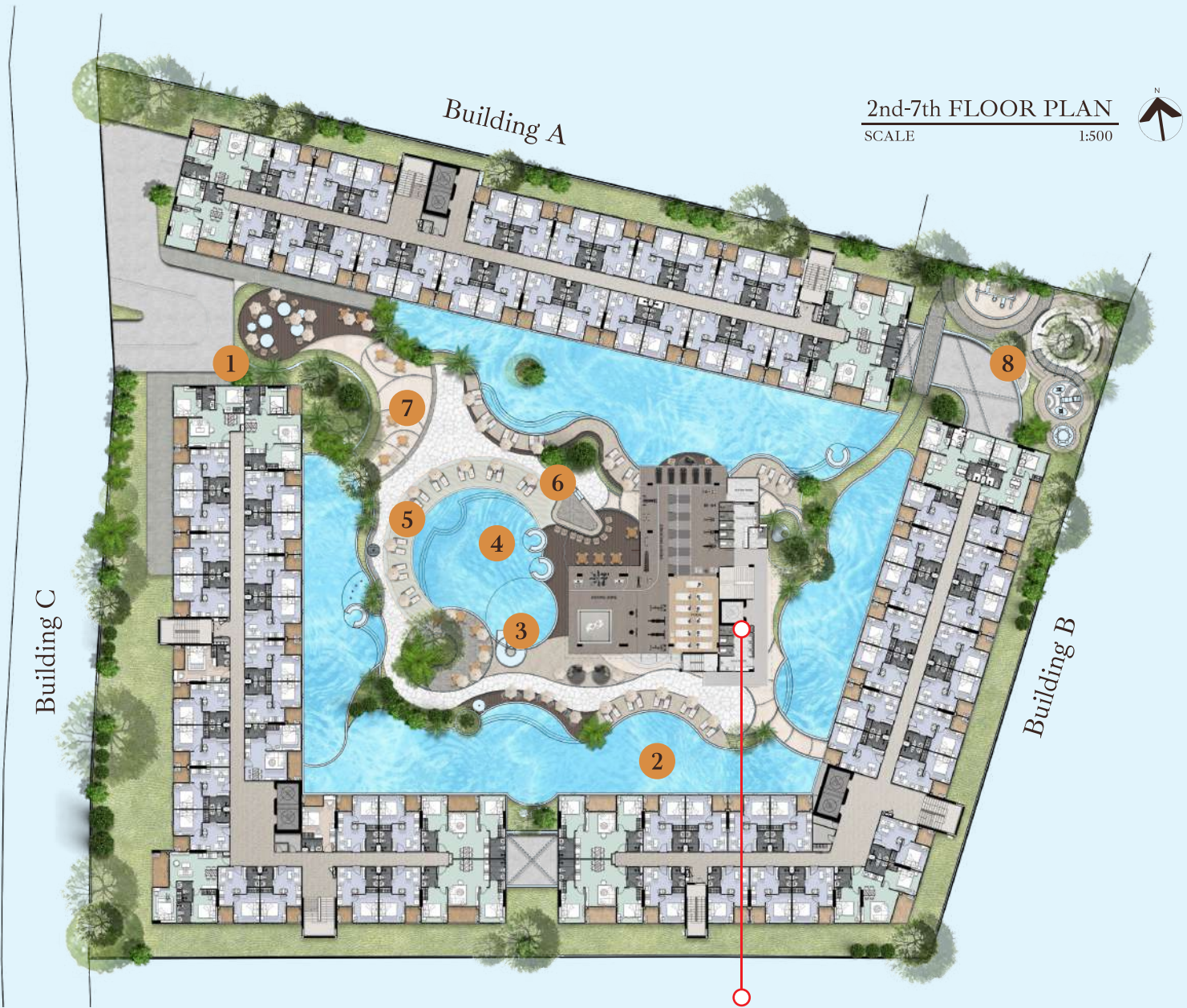
## THE UNITS DESIGN CONCEPT

The units at Zenith Pattaya are designed to blend modern luxury with functionality. Featuring generous high ceilings, premium marble style tiling, and expansive windows, each unit is designed to enhance and maximize space and natural light while offering stunning views of tropical landscaping or the city.

Equipped with energy-efficient air conditioning, steel-core doors with fingerprint access, and facial recognition entry, the units provide both comfort and security. Ground-floor options include direct pool access, while upper-floor units offer serene views, creating the perfect mix of style, convenience, and exclusivity.

*Where luxury, comfort, and tranquility come together seamlessly.*

# MASTER PLAN



2nd-7th FLOOR PLAN  
SCALE 1:500

## POOL & PATIO

- 1 Lobby & Entrance
- 2 Swimming Pool
- 3 Kids Pool
- 4 Jacuzzi
- 5 Pool Deck
- 6 Pool Bar
- 7 Seating Area
- 8 Kids Playground

## HEAVEN SPRING SPA

- ( 1st Floor )
  - Restaurant and Lounge
- ( 2nd Floor ) Wellness & Fitness Hub
  - TechnoGym Fitness Center
  - Boxing Zone
  - Yoga Room
- ( 3rd Floor ) Onsen Spa
  - Open Air Garden Hot Spring
  - Onsen Spa
  - Cold Bath
  - Steam & Sauna Facilities
- ( 4th Floor ) Rooftop Oasis
  - Garden
  - Open Air Garden Hot Spring
  - Shallow Pool

# UNITS PLAN



1 Bedroom Type B ( 30 SQ.M. )



2 Bedroom Type L ( 65 SQ.M. )